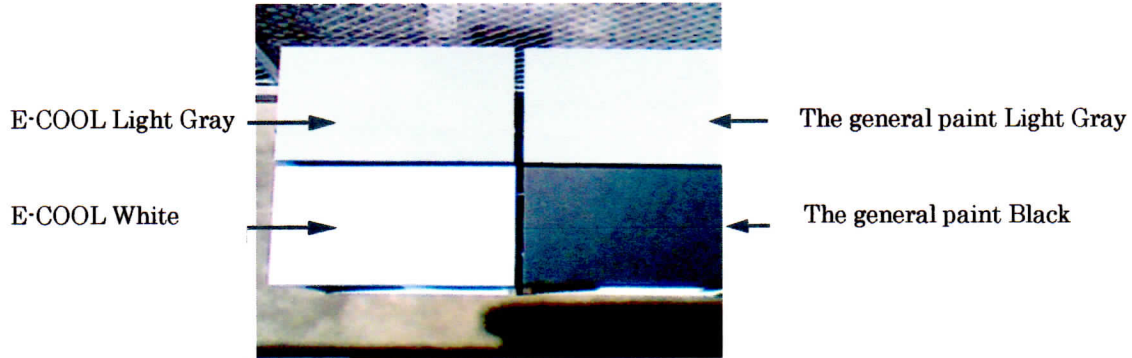


E-COOL Thermography imaging for Roof Paint

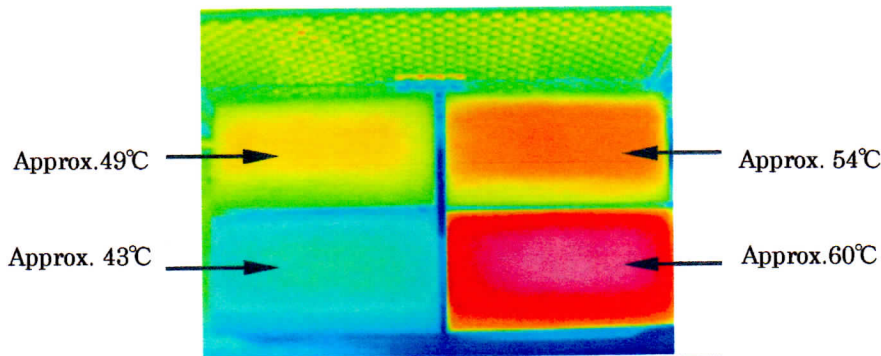
Thermography imaging Cool (Blue ~ Green) Hot (Red ~ White)

Picture for Steel storage shed



The under measured the temperature on Aug.17, 14:20 and photographed by Thermography.

Surface temperature for Steel storage shed

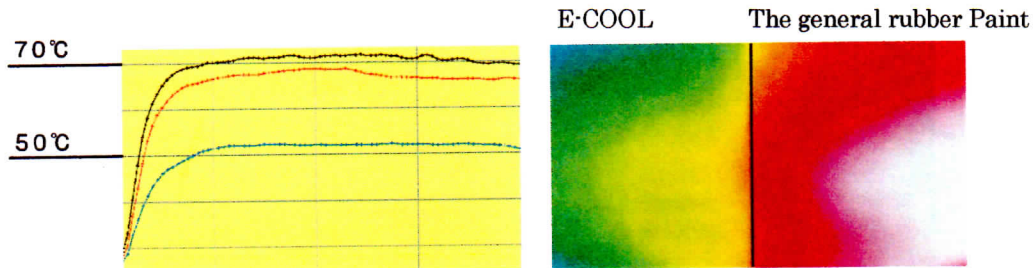


Effective Rubber Plate (Recommend E-COOL Non-Skid)

E-COOL Non-Skid (Rubber Heat-Reflective)

Test method : As same as Metal and Slate

Material: 2mm thickness rubber plate



E-COOL Rubber Protect Paint (Blue line)	52.2°C
The general rubber Paint (Red line)	68.8°C
Non-coating rubber plate (Black line)	71.7°C