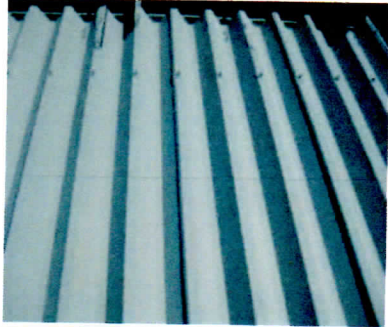


Water –based Acrylic Fluorine Resin E-COOL Construction Case

WAKAYAMA S Chemistry Company Factory Roof Coating.

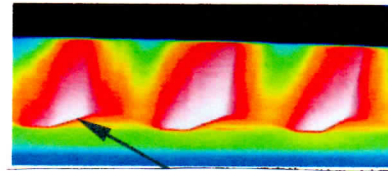
- Steel Plate Roof : Coated by water paint primer and sealer after scraped off the old paint.

After E-COOL coating (Factory roof)

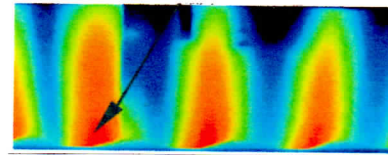


Thermography for factory roof

Before Paint



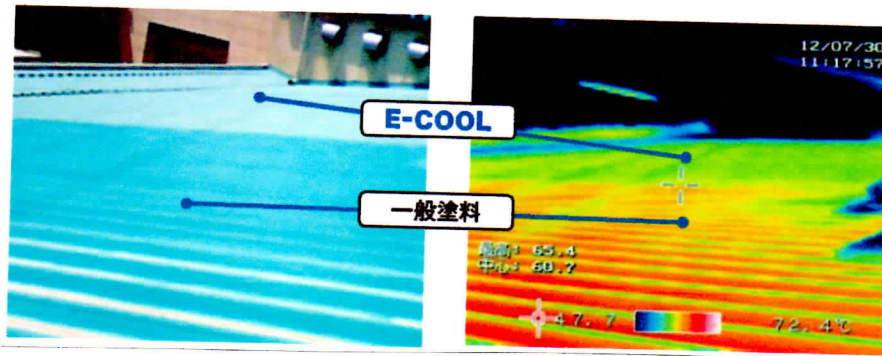
Max 7°C difference



After Paint

WAKAYAMA S Industry Company Factory Roof Coating

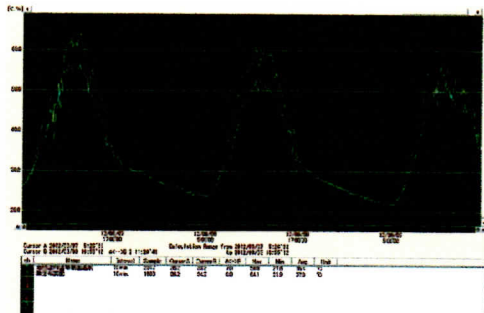
- Steel Plate Roof : Coated by water paint primer and sealer after scraped off the old paint. (E-COOL Blue)



E-COOL

The general Paint

Surface temperature of factory roof : Over 7°C difference is resulting from E-COOL coating.



The attics measurement

Before coating (White line) 64.1°C

After coated E-COOL (Blue line) 56.8°C

+ The highest temperature

Thermometer installed at the attics for each coating roof.