

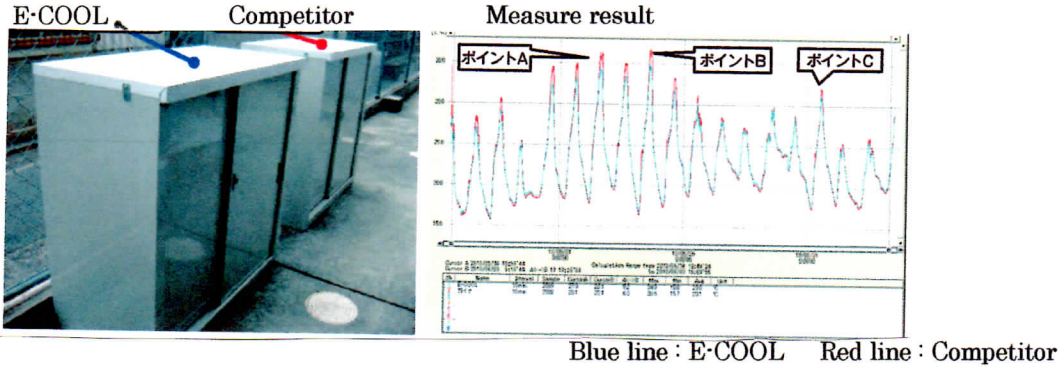
Heat Reflection features for E-COOL

Test method:

Two different products (E-COOL & Competitor paint) painted in the Roof of Steel Closet. (87 W x 47D x 92H/cm)

Install thermometer in inner of closet.

Two Steel Closet are placed under the sunshine.

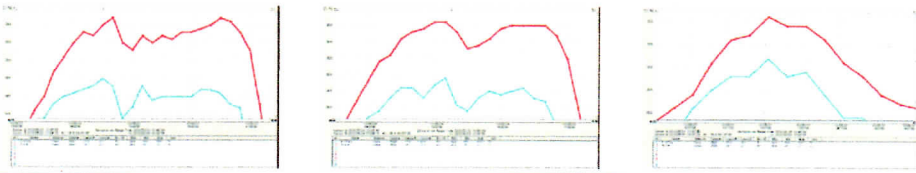


Temperature difference for E-COOL with Competitor (Measure points)

Point A 1.5°C different

Point B 1.5°C different

Point C 1.0°C different



Furthermore, Heat Reflective features check by infrared lamp.

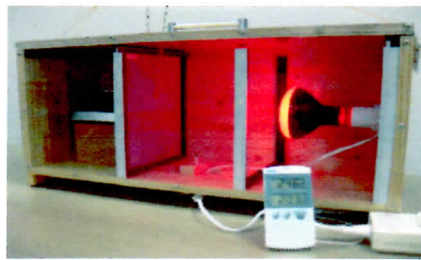
Additional the general paint for comparison.

Test method:

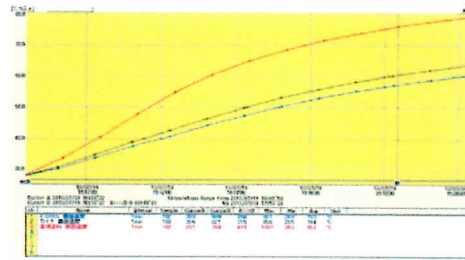
Each coating points are irradiated by infrared lamp.

It is recorded temporal temperature change.

Infrared irradiation device



Measure result

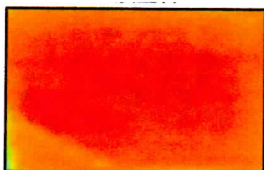


After 10 minute

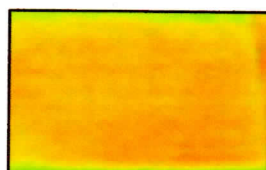
The general paint

Competitor

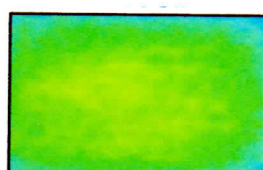
E-COOL



54.6°C



52.3°C



43.4°C